



Sistemi ICT per il Business Networking

Electronic Data Interchange (EDI)

Docente: Vito Morreale (vito.morreale@eng.it)

Introduction

- **Need** of a fast and standardized processing of the business
- **Electronic exchange of data**: a modern instrument to accelerate internal and external processes
- **Electronic Data Interchange (EDI)**:
 - the **computer-to-computer exchange** of **structured information**, ...
 - ... by **agreed message standards**, ...
 - ... **from one computer application to another** ...
 - ... by **electronic means** and ...
 - ... with a **minimum of human intervention**

Electronic Data Interchange (EDI)

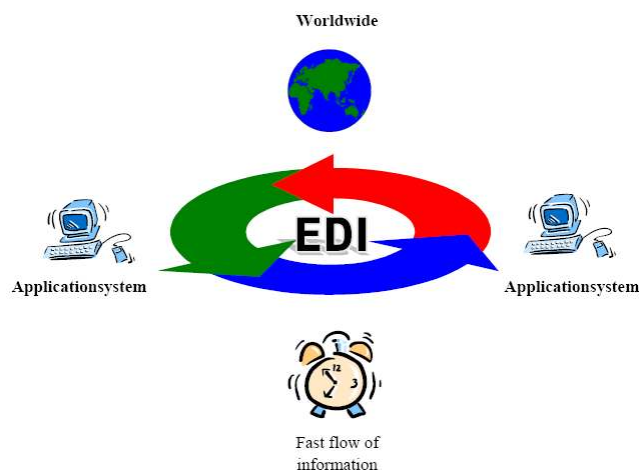
- In **common usage**, EDI is understood to mean **specific interchange methods agreed upon by national or international standards bodies** for the **transfer of business transaction data**
- Advantages:
 - **Avoidance** of **costs-intense recording** activities **susceptible to error**
 - **Automatic data exchange** with standardized formats
 - Communication **between computer applications**
 - **Faster flow of information** (at any time and world-wide)
 - **Costs saving**

1 aprile 2006

ICT Systems for Business Networking

3

Electronic Data Interchange (EDI)



1 aprile 2006

ICT Systems for Business Networking

Business processes without EDI

- document creation → printout and shipment → re-recording by business partner's data department
- This 'intermediate storage' on paper is also referred to as an '**interruption of medium**'.
 - **Avoiding this 'interruption of medium'** in the logistical chain between a company and the supplier **yields** a lot of **cost saving** potentials for both sides

1 aprile 2006

ICT Systems for Business Networking

Electronic exchange of business data

- The electronic exchange of business data **enables** quick information exchange operations between business partners, **without any delays** in time, **24 hours a day, 7 days a week**
- To be able to implement such processes, **the corresponding message formats and communication structures have to be standardised (or agreed)**
- Surprisingly, in this era of technologies such as XML services, the Internet and the World Wide Web, **EDI is still the data format used by the vast majority of electronic commerce transactions in the world**

1 aprile 2006

ICT Systems for Business Networking

EDI

- **Electronic Data Interchange (EDI)** is defined as the **transfer** of **structured data** by **agreed message standards** **from computer to computer** **by electronic means**
- Therefore key concepts are the following:
 - structured data
 - message standards
 - from computer to computer
 - electronic means

1 aprile 2006

ICT Systems for Business Networking

EDI: structured data & from computer to computer

- **What is structured data? How is it different from the printed document? Is it the same as electronic mail?**
- **Printed documents and electronic mail** are designed for humans
 - they can be easily created and acted upon by humans
- **EDI** requires that the computer system itself can easily generate and process messages
- The data format is **designed for computers**
- EDI is **not very readable for humans**

1 aprile 2006

ICT Systems for Business Networking

EDI: message standards

- Clearly, **trading partners must agree** what data is being exchanged, and in what sequence their computer systems should generate the data. **But why to have standards?**
- EDI is concerned with exchanging messages in an **open environment** → **Any company can join**
 - **No one** company **can impose** its own data standards (?)
 - **Internal data standards** are fine for use within an organisation, but will not work outside the organisation
 - There needs to be a **universally agreed** standard message structure
 - IMPORTANT: **universal** doesn't mean the whole world has to agree; it means **any company participating in a particular EDI community** must agree

1 aprile 2006

ICT Systems for Business Networking

EDI: electronic means

- **In the early days of EDI** data was put onto **magnetic tape** and either **posted or sent by courier** to the recipient, who then loaded the tape on a tape deck and the computer read it in the system
- This method was fine for a while, but **problems** arose:
 - The tape was being **physically sent**, and this took **time**
 - The number of tapes that any one organisation needed to handle was growing, leading to a **scheduling problem**
 - The tapes themselves were **vulnerable**

1 aprile 2006

ICT Systems for Business Networking

EDI: electronic means

- The solution to all of these problem is **to send data by telecommunications**, and **since the early 1980's** this has been the increasingly preferred method
- However, this method is not without its own problems:
 - **Timing problem** - bilateral computer links require the both organisations schedule the link at the same time
 - **Each link costs** money
 - **When the number of trading partners grows**, the number of one-to-one links eventually becomes unmanageable
 - **Incompatible computer systems**
- **One solution** is to join an EDI service run by a **Value Added Network (VAN)** supplier

1 aprile 2006

ICT Systems for Business Networking

EDI Standards

- Designed **to be independent** of lower level technologies and **transmitted** using **Internet protocols** as well as **private networks**
- It is important to **differentiate** between the EDI documents and the methods for transmitting them
 - The **older transmission methods** are being replaced by Internet Protocols such as FTP, telnet and email, although standards for these media are still emerging
 - In 2002, the IETF published RFC 3335, offering a **standardized, secure method of transferring EDI data via e-mail**
 - An IETF working group, EDIINT, is preparing similar documents for **HTTP and FTP transfers**

1 aprile 2006

ICT Systems for Business Networking

EDI documents

- EDI documents contain **the same data** that would normally be found in a paper document used for the same organisational function
 - Example: an EDI 940 **ship-from-warehouse** order is used by a manufacturer to tell a warehouse to ship product to a retailer
 - a ship to address
 - bill to address
 - a list of product numbers (usually a UPC code)
 - quantities
 - other information if the parties agree to include it
- EDI is **not confined to just business data** related to trade but encompasses all fields such as **medicine** (patient records, laboratory results, etc.), **transport** (container and modal information, etc.), **engineering**, **construction**, etc.

1 aprile 2006

ICT Systems for Business Networking

EDI Standards

- Three major sets of **EDI standards**
 - **UN/EDIFACT** is the only international standard (in fact, a United Nations recommendation) and is predominant in all areas outside of North America
 - **ANSI ASC X12 (X12)** and the **Uniform Communication Standard (UCS)** are popular in North America and are **very similar to each other**

1 aprile 2006

ICT Systems for Business Networking

EDI Standards

- These standards **prescribe**
 - the **formats**
 - **character sets**, and
 - **data elements** used in the exchange of documents and forms
- The standard **says**
 - which pieces of information are **mandatory** for a particular document
 - which pieces of information are **optional** for a particular document
 - the **rules for the structure** of the document

1 aprile 2006

ICT Systems for Business Networking

Trading partners

- **Trading partners** (EDI Terminology): organizations that send or receive documents from each other
- The trading partners **agree** on some human readable specifications (also called **specification sheets**)
 - the **specific information** to be transmitted and
 - **how** it should be **used** (semantics)
- **Larger companies**
 - have **existing specification sheets** and
 - are usually **unwilling to negotiate**

1 aprile 2006

ICT Systems for Business Networking

Inbound and outbound document

- In EDI terminology "**inbound**" and "**outbound**" refer to the **direction of transmission** of an EDI document in relation to a particular system (not the direction of merchandise, money or other things represented by the document)
 - For example, an EDI document that tells a warehouse to perform an **outbound shipment** is an **inbound document** in relation to the warehouse computer system. It is an **outbound document** in relation to the manufacturer or dealer that transmitted the document.

1 aprile 2006

ICT Systems for Business Networking

EDIFACT

- The acronym stands for **United Nations/Electronic Data Interchange For Administration, Commerce, and Transport**
- Developed under the **United Nations**
- The work of maintenance and further development of this standard is done by the **United Nations Centre for Electronic commerce For Administration, Commerce, and Transport** (UN/CEFACT) (under the **UN Committee on Trade, Economic and Social Council**)
- EDIFACT was developed from 2 fairly widely used **standards** and incorporate the best of the both
 - American JEDI and the United Nations standard for Europe

1 aprile 2006

ICT Systems for Business Networking

United Nations Centre for Electronic commerce For Administration, Commerce, and Transport (UN/CEFACT)

- **Web site:** <http://www.unece.org/cefact>
- **Mission:** to **improve** the ability of business, trade and administrative organizations, from developed, developing and transitional economies, to exchange products and relevant services effectively - and so contribute to the growth of global commerce
- Organization that **welcomes** participation from United Nations Member States, intergovernmental agencies, sectoral and industry associations recognized by the Economic and Social Council of the United Nations (ECOSOC) as well as the private sector, from which much of UN/CEFACT's technical expertise comes from
- UN/CEFACT facilitates the **development of e-business standards** that can **cross all international boundaries** and help **lower transaction costs**, simplify data flow and reduce bureaucracy
- Work outputs of UN/CEFACT activities include **ebXML**, UN/CEFACT's Modelling Methodology (UMM) and **UN/EDIFACT**.

1 aprile 2006

ICT Systems for Business Networking

EN/CEDIFACT

The screenshot shows the UN/CEFACT website interface. At the top, there's a header with the UN/CEFACT logo and navigation links like HOME, PROGRAMS, MEETINGS, INFORMATION RESOURCES, ABOUT UN/CEFACT, and CONTACT US. Below this, there's a main content area with a left sidebar containing a menu (About us, Organization, Recommendations, Standards, Technical Codes for Trade, Meetings and Publications) and a central section titled 'News' with several announcements dated from 2006. On the right, there's a section for 'Upcoming events' listing symposiums and meetings. The footer contains contact information and a copyright notice.

1 aprile 2006

ICT Systems for Business Networking

EDIFACT

- EDIFACT has been adopted by the International Organization for Standardization (ISO) as the **ISO 9735**
- Provides:
 - a **set of syntax rules** to structure data
 - an **interactive exchange protocol** (I-EDI)
 - **standard messages** (allowing multi-country and multi-industry exchange)

1 aprile 2006

ICT Systems for Business Networking

EDIFACT

- The **EDIFACT Standard is**:
 - **application independent**
 - **communication medium independent**
 - **machine independent**
- So EDI and more concretely **EDIFACT gives to the user**:
 - **quicker delivery** and overall **greater accuracy in ordering**
 - **improved logistics** generally, particularly resulting in **lower storage/warehousing costs**

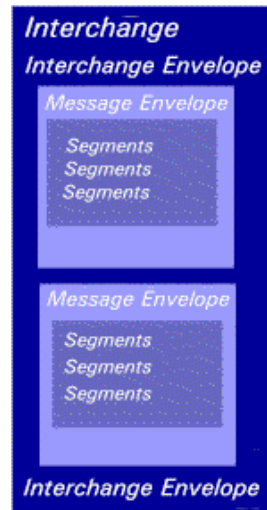
1 aprile 2006

ICT Systems for Business Networking

EDIFACT - Structure

- EDIFACT has a **hierarchical structure**

- The top level element is referred to a **message**.
- A message is a sequence of groups and segments.
- A **group** or **segment** can be mandatory (M) or conditional (C) and can be specified to repeat
 - For example C99 would indicate between 0 and 99 repetitions of a segment or group, whereas M99 would mean between 1 and 99 repetitions



1 aprile 2006

ICT Systems for Business Networking

EDIFACT – Structure: Data elements

- A vital part of the EDIFACT process is the data element directory which is contained within an international standard, ISO 73 72, and it's referred to as the **Trade Data Elements Directory (TDED)**
- Each data element has **a set of attributes**. The basic attributes interesting to EDIFACT users set out of the TDED are:
 - Coded tag or Identifier
 - Title
 - Plain text descriptor
 - A format (Length and data type or class)
 - Date of insertion in the directory
- <http://www.stylusstudio.com/edifact/D04B/segments.htm>

1 aprile 2006

ICT Systems for Business Networking

EDIFACT – Structure: Format

- To indicate the format or **data type** of a data element EDITACT uses the following notation:
 - **a***n* means n alphabetic characters
 - **n***n* means n numeric characters
 - **an***n* means n alpha-numeric characters
 - **a**..*n* means up to n alphabetic characters
 - **an**..*n* means up to n alpha-numeric characters
 - **n**..*n* means up to n numeric characters

1 aprile 2006

ICT Systems for Business Networking

Example of EDIFACT message

- Used to answer to a product availability request

```
UNB+IATB:1+1APPC+LHPPC+940101:0950+1'  
UNH+1+PAORES:93:1:IA'  
MSG+1:45'  
IFT+3+?*XYZCOMPANY AVAILABILITY?*''  
ERC+A7V:1:AMD'  
IFT+3+NO MORE FLIGHTS'  
ODI'  
TVL+240493:1000::1220+FRA+JFK+DL+400+C'  
PDI++C:3+Y::3+F::1'  
APD+74C:0:::6+++++1A'  
TVL+240493:1740::2030+JFK+MIA+DL+081+C'  
PDI++C:4'  
APD+EM2:0:1630::6+++++DA'  
UNT+13+1'  
UNZ+1+1'
```

- ' is a **segment terminator**
- + is a **data element separator**
- : is a **component data element separator**
- * is a **repetition separator**

1 aprile 2006

ICT Systems for Business Networking

Example of EDIFACT message

- **UNH+1+PAORES:93:1:IA'** - the header segment
 - required at the start of every message
 - the message name and version is PAORES 93 revision 1 and it was defined by the organisation IA (IATA)
- **IFT+3+NO MORE FLIGHTS'** - an 'Interactive Free Text' segment containing the text 'NO MORE FLIGHTS'
- **UNT+13+1'** - the tail segment
 - It indicated that the message sent contains 13 segments
- http://www.stylusstudio.com/edi/EDIFACT_standard.html

1 aprile 2006

ICT Systems for Business Networking

EDIFACT Messages

APERAK	Application error and acknowledgement message
AUTHOR	Authorization message
BALANC	Balance message
BANSTA	Banking status message
BAPLIE	Bayplan/stowage plan occupied and empty locations message
BERMAN	Berth management message
BMISRM	Bulk marine inspection summary report message
BOPBNK	Bank transactions and portfolio transactions report message
BOPCUS	Balance of payment customer transaction report message
BOPDIR	Direct balance of payment declaration message

1 aprile 2006

ICT Systems for Business Networking

EDIFACT Messages

BOPINF	Balance of payment information from customer message
BUSCRD	Business credit report message
CALINF	Vessel call information message
CASINT	Request for legal administration action in civil proceedings message
CASRES	Legal administration response in civil proceedings message
CHACCO	Chart of accounts message
CLASET	Classification information set message
CNTCND	Contractual conditions message
COACSU	Commercial account summary message
COARRI	Container discharge/loading report message

1 aprile 2006

ICT Systems for Business Networking

EDIFACT Messages

CODECO	Container gate-in/gate-out report message
CODENO	Permit expiration/clearance ready notice message
COEDOR	Transport equipment stock and profile report message
COHAOR	Container special handling order message
COLREQ	Request for a documentary collection message
COMDIS	Commercial dispute message
CONAPW	Advice on pending works message
CONDPV	Direct payment valuation message
CONDRA	Drawing administration message
CONDRO	Drawing organisation message

1 aprile 2006

ICT Systems for Business Networking

EDIFACT Messages

CONEST	Establishment of contract message
CONITT	Invitation to tender message
CONPVA	Payment valuation message
CONQVA	Quantity valuation message
CONRPW	Response of pending works message
CONTEN	Tender message
CONWQD	Work item quantity determination message
COPARN	Container announcement message
COPAYM	Contributions for payment
COPINO	Container pre-notification message

1 aprile 2006

ICT Systems for Business Networking

EDIFACT Messages

COPRAR	Container discharge/loading order message
COREOR	Container release order message
COSTCO	Container stuffing/stripping confirmation message
COSTOR	Container stuffing/stripping order message
CREADV	Credit advice message
CREEXT	Extended credit advice message
CREMUL	Multiple credit advice message
CUSCAR	Customs cargo report message
CUSDEC	Customs declaration message
CUSEXP	Customs express consignment declaration message

1 aprile 2006

ICT Systems for Business Networking

EDIFACT Messages

CUSPED	Periodic customs declaration message
CUSREP	Customs conveyance report message
CUSRES	Customs response message
DEBADV	Debit advice message
DEBMUL	Multiple debit advice message
DEBREC	Debts recovery message
DELFOR	Delivery schedule message
DELJIT	Delivery just in time message
DESADV	Despatch advice message
DESTIM	Equipment damage and repair estimate message

1 aprile 2006

ICT Systems for Business Networking

EDIFACT Messages

DGRECA	Dangerous goods recapitulation message
DIRDEB	Direct debit message
DIRDEF	Directory definition message
DMRDEF	Data maintenance request definition message
DMSTAT	Data maintenance status report/query message
DOCADV	Documentary credit advice message
DOCAMA	Advice of an amendment of a documentary credit message
DOCAMI	Documentary credit amendment information message
DOCAMR	Request for an amendment of a documentary credit message
DOCAPP	Documentary credit application message

1 aprile 2006

ICT Systems for Business Networking

EDIFACT Messages

DOCARE	Response to an amendment of a documentary credit message
DOCINF	Documentary credit issuance information message
ENTREC	Accounting entries message
FINCAN	Financial cancellation message
FINPAY	Multiple interbank funds transfer message
FINSTA	Financial statement of an account message
GENRAL	General purpose message
GESMES	Generic statistical message
HANMOV	Cargo/goods handling and movement message
ICASRP	Insurance claim assessment and reporting message

1 aprile 2006

ICT Systems for Business Networking

EDIFACT Messages

ICSOLI	Insurance claim solicitor's instruction message
IFCSUM	Forwarding and consolidation summary message
IFTCCA	Forwarding and transport shipment charge calculation message
IFTDGN	Dangerous goods notification message
IFTFCC	International transport freight costs and other charges message
IFTICL	Cargo insurance claims message
IFTMAN	Arrival notice message
IFTMBC	Booking confirmation message
IFTMBF	Firm booking message
IFTMBP	Provisional booking message

1 aprile 2006

ICT Systems for Business Networking

EDIFACT Messages

IFTMCA	Consignment advice message
IFTMCS	Instruction contract status message
IFTMIN	Instruction message
IFTRIN	Forwarding and transport rate information message
IFTSAI	Forwarding and transport schedule and availability information message
IFTSTA	International multimodal status report message
IFTSTQ	International multimodal status request message
IMPDEF	EDI implementation guide definition message
INFCON	Infrastructure condition message
INFENT	Enterprise accounting information message

1 aprile 2006

ICT Systems for Business Networking

EDIFACT Messages

INSDDES	Instruction to despatch message
INSPRE	Insurance premium message
INSREQ	Inspection request message
INSRPT	Inspection report message
INVOIC	Invoice message
INVRPT	Inventory report message
IPPOAD	Insurance policy administration message
IPPOMO	Motor insurance policy message
ISENDS	Intermediary system enablement or disablement message
ITRRPT	In transit report detail message

1 aprile 2006

ICT Systems for Business Networking

EDIFACT Messages

JAPRES	Job application result message
JINFDE	Job information demand message
JOBAPP	Job application proposal message
JOBCON	Job order confirmation message
JOBMOD	Job order modification message
JOBOFF	Job order message
JUPREQ	Justified payment request message
LEDGER	Ledger message
LREACT	Life reinsurance activity message
LRECLM	Life reinsurance claims message

1 aprile 2006

ICT Systems for Business Networking

EDIFACT Messages

MEDPID	Person identification message
MEDPRE	Medical prescription message
MEDREQ	Medical service request message
MEDRPT	Medical service report message
MEDRUC	Medical resource usage and cost message
MEQPOS	Means of transport and equipment position message
MOVINS	Stowage instruction message
MSCONS	Metered services consumption report message
ORDCHG	Purchase order change request message
ORDERS	Purchase order message

1 aprile 2006

ICT Systems for Business Networking

EDIFACT Messages

ORDRSP	Purchase order response message
OSTENQ	Order status enquiry message
OSTRPT	Order status report message
PARTIN	Party information message
PAXLST	Passenger list message
PAYDUC	Payroll deductions advice message
PAYEXT	Extended payment order message
PAYMUL	Multiple payment order message
PAYORD	Payment order message
PRICAT	Price/sales catalogue message

1 aprile 2006

ICT Systems for Business Networking

EDIFACT Messages

PRIHIS	Pricing history message
PROCST	Project cost reporting message
PRODAT	Product data message
PRODEX	Product exchange reconciliation message
PROINQ	Product inquiry message
PROSRV	Product service message
PROTAP	Project tasks planning message
PRPAID	Insurance premium payment message
QALITY	Quality data message
QUOTES	Quote message

1 aprile 2006

ICT Systems for Business Networking

EDIFACT Messages

RDRMES	Raw data reporting message
REBORD	Reinsurance bordereau message
RECADV	Receiving advice message
RECALC	Reinsurance calculation message
RECECO	Credit risk cover message
RECLAM	Reinsurance claims message
RECORD	Reinsurance core data message
REGENT	Registration of enterprise message
RELIST	Reinsured objects list message
REMADV	Remittance advice message

1 aprile 2006

ICT Systems for Business Networking

EDIFACT Messages

REPREM	Reinsurance premium message
REQDOC	Request for document message
REQOTE	Request for quote message
RESETT	Reinsurance settlement message
RESMSG	Reservation message
RETACC	Reinsurance technical account message
RETANN	Announcement for returns message
RETINS	Instruction for returns message
RPCALL	Repair call message
SAFHAZ	Safety and hazard data message

1 aprile 2006

ICT Systems for Business Networking

EDIFACT Messages

SANCRT	International movement of goods governmental regulatory message
SLSFCT	Sales forecast message
SLSRPT	Sales data report message
SOCAD	Social administration message
SSIMOD	Modification of identity details message
SSRECH	Worker's insurance history message
SSREGW	Notification of registration of a worker message
STATAC	Statement of account message
STLRPT	Settlement transaction reporting message
SUPCOT	Superannuation contributions advice message
SUPMAN	Superannuation maintenance message

1 aprile 2006

ICT Systems for Business Networking

EDIFACT Messages

SUPRES	Supplier response message
TANSTA	Tank status report message
TAXCON	Tax control message
TPFRE	Terminal performance message
UTILMD	Utilities master data message
UTILTS	Utilities time series message
VATDEC	Value added tax message
VESDEP	Vessel departure message
WASDIS	Waste disposal information message
WKGRDC	Work grant decision message
WKGRRE	Work grant request message

1 aprile 2006

ICT Systems for Business Networking

CNTCND - Contractual conditions message

- A message **sent by a customer to a supplier** and other interested parties providing the **contractual conditions of a previously negotiated contract** in order to enable the **automatic processing of invoices for orders** which have been made against the contract or for the completion of identified stages within the contract
- This message is typically used in the case where **a general contract has been established** between the customer and the supplier against which goods will be ordered over a period of time on an order by order basis
- The contract will have been **previously negotiated** and accepted

1 aprile 2006

ICT Systems for Business Networking

Despatch advice message (DESADV)

- A message specifying **details for goods despatched or ready for despatch under agreed conditions**
- **Principles:**
 - The message intent is **to advise of the detailed contents of a consignment**
 - The message relates to **one seller** and **one buyer** or their respective agents
 - The message relates to a **single despatch point** and **single or multiple destination points**
 - It may cover **a number of different items or packages**

1 aprile 2006

ICT Systems for Business Networking

Despatch advice message (DESADV)

UNH# Message header	x1 (M)	Segment Group 8	x10 (C)
BGM Beginning of message	x1 (M)	EQD Equipment details	x1 (M)
DTM Date/time/period	x10 (C)	MEA Measurements	x5 (C)
ALI Additional information	x5 (C)	SEL Seal number	x25 (C)
MEA Measurements	x5 (C)	EOA Attached equipment	x5 (C)
MOA Monetary amount	x5 (C)	Segment Group 9	x10 (C)
CUX Currencies	x9 (C)	HAN Handling instructions	x1 (M)
Segment Group 1	x99 (C)	FTX Free text	x10 (C)
RFF Reference	x1 (M)	Segment Group 10	x9999 (C)
DTM Date/time/period	x9 (C)	CPS Consignment packing sequence	x1 (M)
Segment Group 2	x99 (C)	FTX Free text	x5 (C)
NAD Name and address	x1 (M)	QVR Quantity variances	x9 (C)
LOC Place/location identification	x10 (C)	Segment Group 11	x9999 (C)
Segment Group 3	x99 (C)	PAC Package	x1 (M)
RFF Reference	x1 (M)	MEA Measurements	x10 (C)
DTM Date/time/period	x99 (C)	QTY Quantity	x10 (C)
Segment Group 4	x10 (C)	Segment Group 12	x10 (C)
CTA Contact information	x1 (M)	HAN Handling instructions	x1 (M)
COM Communication contact	x5 (C)	FTX Free text	x10 (C)
Segment Group 5	x10 (C)	Segment Group 13	x1000 (C)
TOD Terms of delivery or transport	x1 (M)	PCI Package identification	x1 (M)
LOC Place/location identification	x5 (C)	RFF Reference	x1 (C)
FTX Free text	x5 (C)	DTM Date/time/period	x5 (C)
Segment Group 6	x10 (C)	Segment Group 14	x99 (C)
TDI Transport information	x1 (M)	GIR Related identification numbers	x1 (M)
PCD Percentage details	x6 (C)	DTM Date/time/period	x5 (C)
TMD Transport movement details	x1 (C)	Segment Group 15	x99 (C)
Segment Group 7	x10 (C)	GIN Goods identity number	x1 (M)
LOC Place/location identification	x1 (M)	DLM Delivery limitations	x10 (C)
DTM Date/time/period	x10 (C)	Segment Group 16	x99 (C)
		COD Component details	x1 (M)
		MEA Measurements	x9 (C)
		QTY Quantity	x9 (C)
		PCD Percentage details	x9 (C)

1 aprile 2006

ICT Systems for Business Networking

Despatch advice message (DESADV)

Segment Group 10	x9999 (C)	Segment Group 20	x100 (C)
Segment Group 17	x9999 (C)	LOC Place/location identification	x1 (M)
LIN Line item	x1 (M)	NAD Name and address	x1 (C)
PIA Additional product id	x10 (C)	DTM Date/time/period	x1 (C)
IMD Item description	x99 (C)	QTY Quantity	x10 (C)
MEA Measurements	x10 (C)	Segment Group 21	x1000 (C)
QTY Quantity	x10 (C)	SGP Split goods placement	x1 (M)
ALI Additional information	x10 (C)	QTY Quantity	x10 (C)
GIN Goods identity number	x100 (C)	Segment Group 22	x9999 (C)
GIR Related identification numbers	x100 (C)	PCI Package identification	x1 (M)
DLM Delivery limitations	x100 (C)	DTM Date/time/period	x5 (C)
DTM Date/time/period	x5 (C)	MEA Measurements	x10 (C)
NAD Name and address	x99 (C)	QTY Quantity	x1 (C)
TMD Transport information	x11 (C)	Segment Group 23	x10 (C)
TMD Transport movement details	x1 (C)	GIN Goods identity number	x1 (M)
HAN Handling instructions	x20 (C)	DLM Delivery limitations	x100 (C)
FTX Free text	x99 (C)	Segment Group 24	x10 (C)
MOA Monetary amount	x5 (C)	HAN Handling instructions	x1 (M)
PAC Package	x9 (C)	FTX Free text	x5 (C)
Segment Group 18	x99 (C)	GIN Goods identity number	x1000 (C)
RFF Reference	x1 (M)	Segment Group 25	x10 (C)
NAD Name and address	x1 (C)	QVR Quantity variances	x1 (M)
CTA Contact information	x1 (C)	DTM Date/time/period	x5 (C)
DTM Date/time/period	x1 (C)	CNT Control total	x5 (C)
Segment Group 19	x9999 (C)	UNT Message trailer	x1 (M)
DGS Dangerous goods	x1 (M)		
QTY Quantity	x1 (C)		
FTX Free text	x5 (C)		
Segment Group 20	x100 (C)		
LOC Place/location identification	x1 (M)		
NAD Name and address	x1 (C)		
DTM Date/time/period	x1 (C)		
QTY Quantity	x10 (C)		
Segment Group 21	x1000 (C)		
SGP Split goods placement	x1 (M)		
QTY Quantity	x10 (C)		

1 aprile 2006

ICT Systems for Business Networking

DESADV – UNH: Message header

Pos	Segment	M/C	Repeat	Repr.	Notes
010	0062 Message reference number	M	1		an..14
020	S009 MESSAGE IDENTIFIER	M	1		
	0065 Message type	M			an..6
	0052 Message version number	M			an..3
	0054 Message release number	M			an..3
	0051 Controlling agency, coded	M			an..3
	0057 Association assigned code	C			an..6
	0110 Code list directory version number	C			an..6
	0113 Message type sub-function identification	C			an..6
030	0068 Common access reference	C	1		an..35
040	S010 STATUS OF THE TRANSFER	C	1		
	0070 Sequence of transfers	M			n..2
	0073 First and last transfer	C			a1
050	S016 MESSAGE SUBSET IDENTIFICATION	C	1		
	0115 Message subset identification	M			an..14
	0116 Message subset version number	C			an..3
	0118 Message subset release number	C			an..3
	0051 Controlling agency, coded	C			an..3
060	S017 MESSAGE IMPLEMENTATION GUIDELINE IDENTIFICATION	C	1		
	0121 Message implementation guideline identification	M			an..14
	0122 Message implementation guideline version number	C			an..3
	0124 Message implementation guideline release number	C			an..3
	0051 Controlling agency, coded	C			an..3
070	S018 SCENARIO IDENTIFICATION	C	1		
	0127 Scenario identification	M			an..14
	0128 Scenario version number	C			an..3
	0130 Scenario release number	C			an..3
	0051 Controlling agency, coded	C			an..3

1 aprile 2006

ICT Systems for Business Networking

DESADV - BGM: Beginning of message

Pos	Segment	M/C	Repeat	Repr.	Notes
010	C002 DOCUMENT/MESSAGE NAME	C	1		
	1001 Document name code	C			an..3
	1131 Code list identification code	C			an..17
	3055 Code list responsible agency code	C			an..3
	1000 Document name	C			an..35
020	C106 DOCUMENT/MESSAGE IDENTIFICATION	C	1		
	1004 Document identifier	C			an..35
	1056 Version identifier	C			an..9
	1060 Revision identifier	C			an..6
030	1225 Message function code	C	1		an..3
040	4343 Response type code	C	1		an..3

1 aprile 2006

ICT Systems for Business Networking

DESADV - TOD: Terms of delivery or transport

Pos	Segment	M/C	Repeat	Repr.	Notes
010	4055 Delivery or transport terms function code	C	1	an..3	
020	4215 Transport charges payment method code	C	1	an..3	
030	C100 TERMS OF DELIVERY OR TRANSPORT	C	1		
	4053 Delivery or transport terms description code	C		an..3	
	1131 Code list identification code	C		an..17	
	3055 Code list responsible agency code	C		an..3	
	4052 Delivery or transport terms description	C		an..70	
	4052 Delivery or transport terms description	C		an..70	

1 aprile 2006

ICT Systems for Business Networking

DESADV - LOC: Place/location identification

Pos	Segment	M/C	Repeat	Repr.	Notes
010	3227 Location function code qualifier	M	1	an..3	
020	C517 LOCATION IDENTIFICATION	C	1		
	3225 Location name code	C		an..35	
	1131 Code list identification code	C		an..17	
	3055 Code list responsible agency code	C		an..3	
	3224 Location name	C		an..256	
030	C519 RELATED LOCATION ONE IDENTIFICATION	C	1		
	3223 First related location name code	C		an..25	
	1131 Code list identification code	C		an..17	
	3055 Code list responsible agency code	C		an..3	
	3222 First related location name	C		an..70	
040	C553 RELATED LOCATION TWO IDENTIFICATION	C	1		
	3233 Second related location name code	C		an..25	
	1131 Code list identification code	C		an..17	
	3055 Code list responsible agency code	C		an..3	
	3232 Second related location name	C		an..70	
050	5479 Relation code	C	1	an..3	

1 aprile 2006

ICT Systems for Business Networking

DESADV - 3227: Location function code qualifier

1	Place of terms of delivery
	(3018) Point or port of departure, shipment or destination, as required under the applicable terms of delivery, e.g. Incoterms.
2	Payment place
	[3108] Place where funds are to be, or have been made available to the creditor.
3	Tare check place
	Place where equipment tare has been or must be checked for official assessment.
4	Goods receipt place
	Place at which the goods have been received.
5	Place of departure
	(3214) Port, airport or other location from which a means of transport or transport equipment is scheduled to depart or has departed.
6	Ward bed
	A bed in a ward.
7	Place of delivery
	(3246) Place to which the goods are to be finally delivered under transport contract terms (operational term).
8	Place of destination
	Port, airport or other location to which a means of transport or transport equipment is destined.

1 aprile 2006

ICT Systems for Business Networking

DESADV – TDT: Transport information

Pos	Segment	M/C	Repeat	Repr.	Notes
010	8051 Transport stage code qualifier	M	1	an..3	
020	8028 Means of transport journey identifier	C	1	an..17	
030	C220 MODE OF TRANSPORT	C	1		
	8067 Transport mode name code	C		an..3	
	8066 Transport mode name	C		an..17	
040	G004 TRANSPORT MEANS	G	1		
	8179 Transport means description code	C		an..8	
	1131 Code list identification code	C		an..17	
	3055 Code list responsible agency code	C		an..3	
	8178 Transport means description	C		an..17	
050	C040 CARRIER	C	1		
	3127 Carrier identifier	C		an..17	
	1131 Code list identification code	C		an..17	
	3055 Code list responsible agency code	C		an..3	
	3128 Carrier name	C		an..35	
060	8101 Transit direction indicator code	C	1	an..3	
070	C401 EXCESS TRANSPORTATION INFORMATION	C	1		
	8457 Excess transportation reason code	M		an..3	
	8459 Excess transportation responsibility code	M		an..3	
	7130 Customer shipment authorisation identifier	C		an..17	
080	C222 TRANSPORT IDENTIFICATION	C	1		
	8213 Transport means identification name identifier	C		an..9	
	1131 Code list identification code	C		an..17	
	3055 Code list responsible agency code	C		an..3	
	8212 Transport means identification name	C		an..35	
	8453 Transport means nationality code	C		an..3	
090	8281 Transport means ownership indicator code	C	1	an..3	

1 aprile 2006

ICT Systems for Business Networking

8179 - Transport means description code

X6	Aircraft
	A machine capable of flight. Note: 1. This code value will be removed effective with directory D.06A.
X7	Car with caravan
	A caravan towed by a car. Note: 1. This code value will be removed effective with directory D.06A.
X8	Container ship
	Vessel capable of carrying containers and other cargo. Note: 1. This code value will be removed effective with directory D.06A.
X9	Exceptional transport
	Transport for which common characteristics are not applicable (e.g. big transformers requiring special wagons, special tackles, etc.). Note: 1. This code value will be removed effective with directory D.06A.
X10	Bus
	To specify that the means of transportation is a bus. Note: 1. This code value will be removed effective with directory D.06A.
X11	Ship
	A large vessel navigating deep water. Note: 1. This code value will be removed effective with directory D.06A.
X12	Ship tanker
	A large vessel equipped to transport liquids. Note: 1. This code value will be removed effective with directory D.06A.
X13	Ocean vessel
	An ocean-going vessel that is not a ship. Note: 1. This code value will be removed effective with directory D.06A.
X15	Taxi
	A means of transport identification code indicating a taxi. Note: 1. This code value will be removed effective with directory D.06A.
X16	Barge
	A category of boat used to transport material over water. Note: 1. This code value will be removed effective with directory D.06A.

1 aprile 2006

ICT Systems for Business Networking

LIN - Line item

Pos	Segment	M/C	Repeat	Repr.	Notes
010	1082 Line item identifier	C	1	an..6	
020	1229 Action request/notification description code	C	1	an..3	
030	C212 ITEM NUMBER IDENTIFICATION	C	1		
	7140 Item identifier	C		an..35	
	7143 Item type identification code	C		an..3	
	1131 Code list identification code	C		an..17	
	3055 Code list responsible agency code	C		an..3	
040	C829 SUB-LINE INFORMATION	C	1		
	5495 Sub-line indicator code	C		an..3	
	1082 Line item identifier	C		an..6	
050	1222 Configuration level number	C	1	n..2	
060	7083 Configuration operation code	C	1	an..3	

1 aprile 2006

ICT Systems for Business Networking

IMD - Item description

Pos	Segment	M/C	Repeat	Repr.	Notes
010	7077 Description format code	C	1	an..3	
020	C272 ITEM CHARACTERISTIC	C	1		
	7081 Item characteristic code	C		an..3	
	1131 Code list identification code	C		an..17	
	3055 Code list responsible agency code	C		an..3	
030	C273 ITEM DESCRIPTION	C	1		
	7009 Item description code	C		an..17	
	1131 Code list identification code	C		an..17	
	3055 Code list responsible agency code	C		an..3	
	7008 Item description	C		an..256	
	7008 Item description	C		an..256	
	3453 Language name code	C		an..3	
040	7383 Surface or layer code	C	1	an..3	

1 aprile 2006

ICT Systems for Business Networking

DESADV - Example

1	UNH	UNH+1+DESADV:D:97A:UN'
2	BGM	BGM+351+1234+9'
3	DTM	DTM+137:20030702:102'
4	NAD	NAD+BY+12345::91'
5	NAD	NAD+SE+ABCDE::92'
6	TDT	TDT+25+1234+3:Road++CarrierCode::92:CarrierName'
7	CPS	CPS+1++4'
8	LIN	LIN+1++66550000011311-01:BP::92+1:B'
9	PIA	PIA+1+TESTIDLIEF:VP'00
10	QTY	QTY+12:1000:PCE'
11	DTM	DTM+11:20030705:102'
12	NAD	NAD+ST+001::92'
13	RFF	RFF+CT:551000000110'
14	RFF	RFF+AAK:12345678'
15	LOC	LOC+11+00001::92'
16	CPS	CPS+2++1'
17	PAC	PAC+1++PMatInner::92'
18	QTY	QTY+52:10:PCE'

1 aprile 2006

ICT Systems for Business Networking

DESADV - Example

19	PCI	PCI+17+S0001+1'
20	PCI	PCI+17+S0002+1'
21	PCI	PCI+17+S0003+1'
22	PCI	PCI+17+S0004+1'
23	PCI	PCI+17+S0005+1'
24	PCI	PCI+17+S0006+1'
25	PAC	PAC+6+2+PHM01::91'
26	LIN	<u>LIN+1++66550000011311-01:BP::92'</u>
27	CPS	CPS+3++3'
28	PAC	PAC+1++PMatOuter::92'
29	QTY	QTY+1:1:PCE'
30	PCI	PCI+17+M0001+1'
31	GIN	GIN+ML+S0001'
32	GIN	GIN+ML+S0002'
33	GIN	GIN+ML+S0003'
34	GIN	GIN+ML+S0004'

1 aprile 2006

ICT Systems for Business Networking

DESADV - Example

35	PAC	<u>PAC+1+2+PHM02::92'</u>
36	CPS	CPS+3++3'
37	PAC	PAC+1++PMatOuter::92'
38	QTY	QTY+1:1:PCE'
39	PCI	PCI+17+M0002+1'
40	GIN	GIN+ML+S0005'
41	GIN	GIN+ML+S0006'
42	PAC	<u>PAC+1+2+PHM02::92'</u>
43	UNT	UNT+43+1'

1 aprile 2006

ICT Systems for Business Networking

Current state of EDIFACT

- EDIFACT is still **widely used** in the **high tech, civil aviation** and **tourism** industries and is likely to **remain** so for some time ...
 - ... due to **the amount of software** making use of it and the need for newer systems to be able to integrate with legacy systems
- **Europe** started early with adopting EDIFACT and therefore has a large installed base, where as for example the **Asian region** started later with B2B implementations and is therefore using more XML standards

1 aprile 2006

ICT Systems for Business Networking

ANSI ASC X12

- The **official** designation of the **US National standards body** for the development and maintenance of EDI standards for the **United States**
- The group was founded in **1979** and is an accredited standards committee under the **American National Standards Institute**
- The acronym stands for "**American National Standards Institute Accredited Standards Committee X12**"
 - with the designation of X12 being a **sequential** designator assigned by ANSI at the time of accreditation with no other significance
- **RosettaNet** is a growing industry de-facto standard in the high tech industry, partly replacing ANSI

1 aprile 2006

ICT Systems for Business Networking

EDIFICE

- Web site: <http://www.edifice.org>
- The European B2B Forum for the **Electronics Industry**
- Provides a **forum** for companies with interests in Computing, Electronics, and Telecommunication, which as a group, drives and enables global standardised B2B adoption in Europe
- EDIFICE represents **the majority of the European electronics industry** and is **recognised as such by other organisations**
- EDIFICE is a **non-profit organisation**, organised in the form of an association and governed by the articles of this Agreement, any regulations promulgated hereunder and by Articles 60-79 of the Swiss Civil Code

1 aprile 2006

ICT Systems for Business Networking

EDIFICE

- The **objectives** of EDIFICE are:
 - to support, influence and promote the development, implementation and use of **international standards** and related implementation **guidelines** for B2B;
 - to design, develop and maintain a **Framework for B2B**;
 - to maintain **relationships with other communities** and be receptive to **cross industry collaboration**, aiming at the implementation of B2B;
 - to act as a **B2B competence centre** for the industry, setting direction, creating awareness and providing learning opportunities on B2B concepts;
 - to **share B2B experiences** on the implementation of standards

1 aprile 2006

ICT Systems for Business Networking

Web-EDI

- **Web-EDI** solutions **translates EDI data** into many formats (including HTML, XML and proprietary formats), **allowing non-EDI users to read and send EDI messages** to their trading partner
- The core company ("Hub") or a trading partner can benefit from **fast, secure, reliable Web-based trading solutions**
 - Companies of all sizes, particularly smaller organizations
- **To reduce the complexity, cost, and time** associated with conducting business electronically

1 aprile 2006

ICT Systems for Business Networking

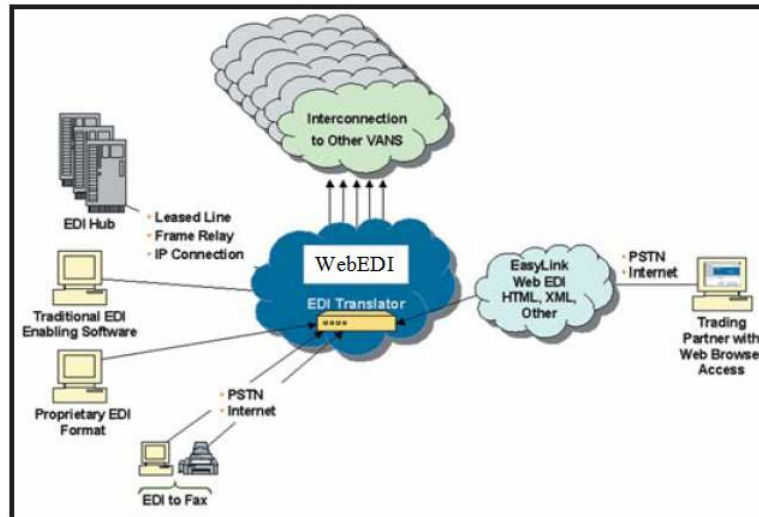
Web-EDI

- Web-EDI provides companies with options **to reach trading partners** who have less sophisticated or non-compatible e-business infrastructures
- Web EDI service acts as a **bi-directional EDI to HTML, XML, or proprietary format converter**
 - "Hub" customers can continue sending and receiving EDI **using their current systems and applications**
 - Smaller trading partners can then use a **secure browser-based trading tool** to view, update and send EDI documents such as Invoices, Purchase Orders, Advanced Ship Notices, and more

1 aprile 2006

ICT Systems for Business Networking

Web-EDI Architecture



1 aprile 2006

ICT Systems for Business Networking

Web-EDI features

- **Main features** a Web EDI solution should provide:
 - **Multiple network connectivity options**, including dedicated, dial-up, and many IP based access methods
 - **Interconnections with major e-commerce networks** worldwide
 - High capacity networks for **rapid message delivery**
 - Strong **security**, including HTTPS, IPSec, SSL, and others
 - **Non-repudiation** and **message delivery confirmation**
 - Technical implementation **support** and **customization** services

1 aprile 2006

ICT Systems for Business Networking

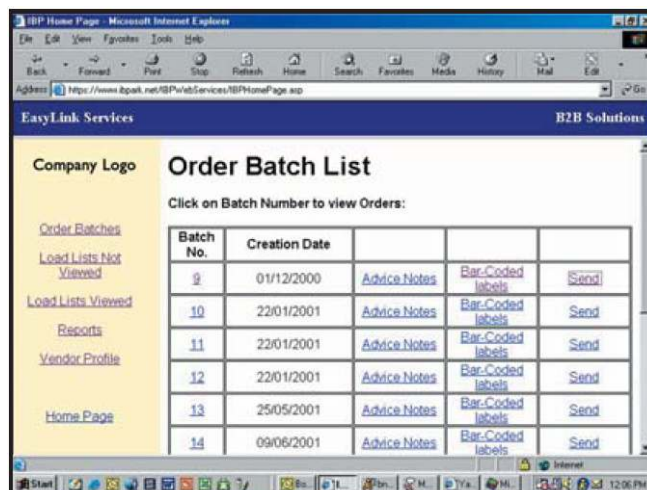
Web-EDI benefits

- Some of **benefits** a Web EDI solution should provide:
 - Communicate electronically** with all trading partners
 - Decrease business processing costs** and **fuel faster transaction** completion via **elimination** of slow, manual, error-prone, paper-intensive transaction delivery methods
 - Increase efficiency** by consolidating transaction delivery through a single vendor with multiple modes of delivery
 - No changes to current EDI processes/systems:** Web EDI leverages existing infra-structure to reach all of an enterprise's trading partners, regardless of their preferred connectivity

1 aprile 2006

ICT Systems for Business Networking

Web-EDI



1 aprile 2006

ICT Systems for Business Networking

References

- **EDI** (provided by the teacher)